



ALA MOANA HOTEL

by mantra

Ala Moana Hotel by Mantra
410 Atkinson Dr., Honolulu, HI 96814
(808) 955-4811 | www.alamoanahotelhonolulu.com



Eat, Shop and Stay in the Heart of Honolulu Experience Hawaii at the Ala Moana Hotel



Ala Moana Hotel by Mantra is conveniently located between Waikiki and downtown Honolulu. Ala Moana Beach Park is within walking distance--an oasis that's perfect for beachgoing, relaxing and exercising. The hotel is directly connected to Ala Moana Center, Hawaii's largest shopping paradise. On the top floor of our hotel is the popular restaurant Signature Prime Steak & Seafood, where you can experience some of the finest steaks and seafood on the island, while enjoying panoramic views of Honolulu.

[Facilities]

- Swimming Pool and Spacious Sundeck (Waikiki Tower 3rd Floor): 8:00 a.m. to sunset (daily)
- Fitness Center with Sauna and Steam Room (Waikiki Tower 3rd Floor): 5 a.m. - Midnight daily
- Restaurants and coffee shops
- 15,000 square feet of meeting space for any event
- Convenience store with souvenirs and daily necessities (Lobby Level): 8 a.m.-11:30 p.m. (daily)
- DADA Salon & Spa offering hair styling, makeup, nails, massage and more (Waikiki Tower 3F)
- Onsite car rentals (Lobby Level)

[Service]

- Japanese-speaking staff
- Catering and banquets
- ATM/banking services
- Dry cleaning service
- Parking: self-parking \$39/day, valet parking \$49/day
- Complimentary high-speed Internet (WiFi) in all guest rooms, lobby and other public areas

* Business hours and listed fees for facilities are subject to change without notice.



Ala Moana Center



Ala Moana Center Skybridge



Hawaii Convention Center

Ala Moana Area

Ala Moana, the center of Honolulu, is a rapidly evolving and developing neighborhood.

The Ala Moana neighborhood continues to undergo exciting new developments and is an area where locals and visitors alike gather and play. Ala Moana Hotel by Mantra is close to the beach, adding to the resort-like atmosphere. Ala Moana Shopping Center is directly connected to our hotel by a dedicated skybridge and continues to evolve, offering Hawaii's largest selection of stores and eateries. There are multiple shopping, dining and entertainment options within walking distance, including Ward Village, Ward Theatres, the Kapiolani/Keeaumoku corridor and Waikiki. The area is popular not only with groups, but also with independent travelers who are able to rent a car and explore the island on their own.

Ala Moana Center (1 minute walk)

Hawaii's largest shopping mall with over 350 shops and restaurants. The hotel is connected to the Ala Moana Hotel by a skybridge, making it convenient for shopping and dining.

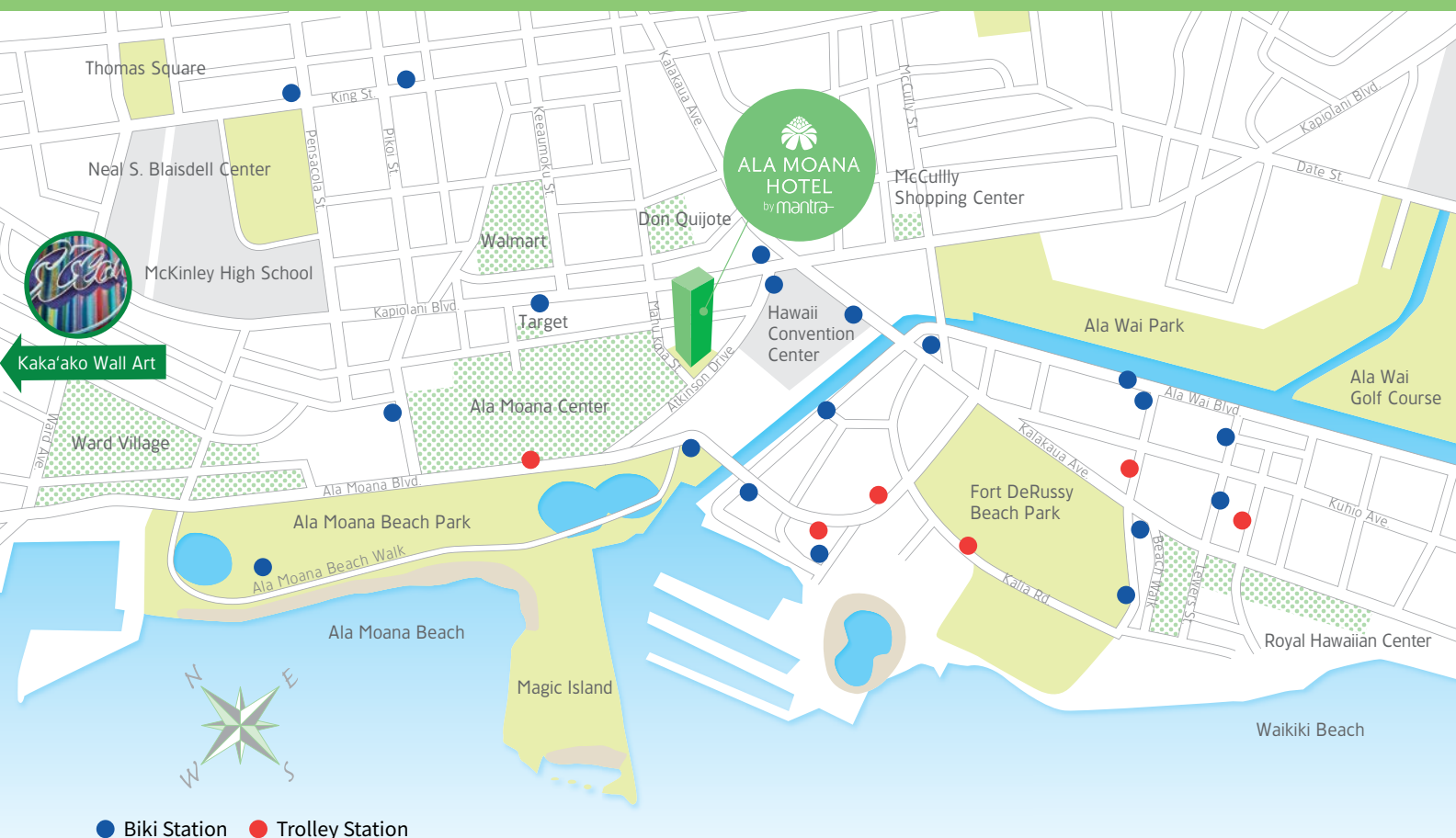
Hawaii Convention Center (2 minutes on foot)

Hawaii's largest convention center. Many conferences, meetings, and events are held there. A two-minute walk from Ala Moana Hotel.

Don Quijote

(5 minutes on foot)

A 24-hour supermarket with groceries, souvenirs, household goods, and more.

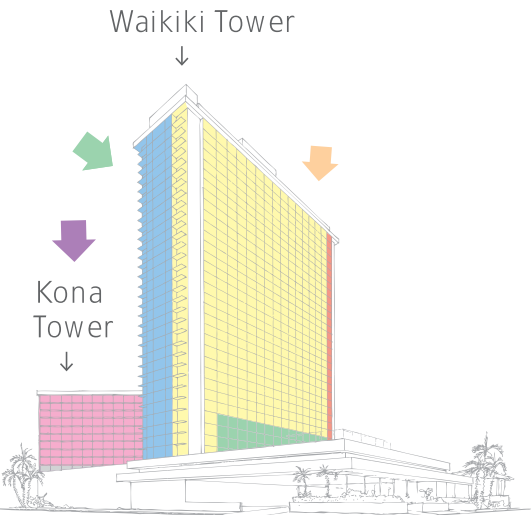
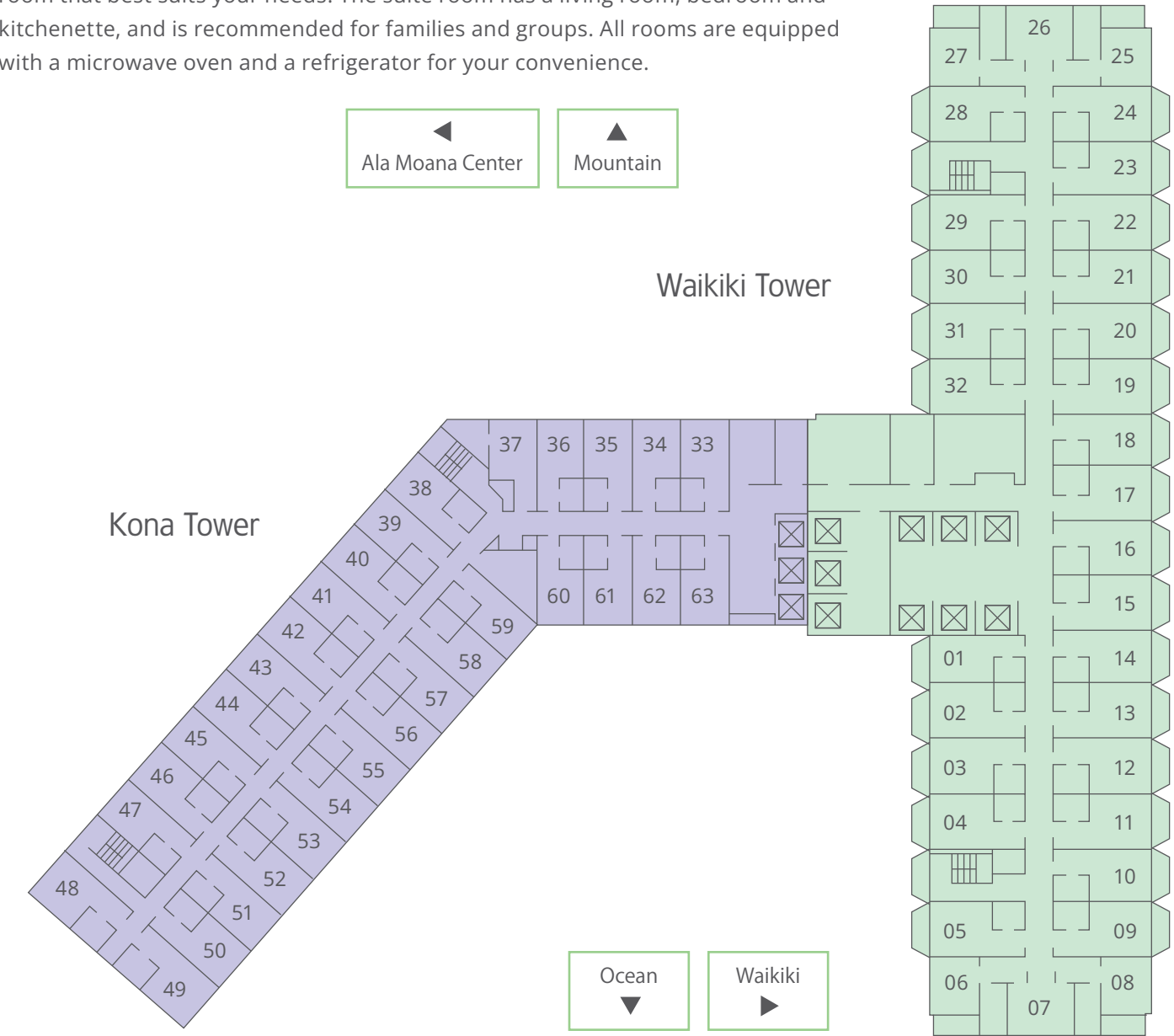


Guest Rooms

FREE
WIFI

The rooms are clean and well appointed.

We offer various room options with different sizes and views, so you can choose the room that best suits your needs. The suite room has a living room, bedroom and kitchenette, and is recommended for families and groups. All rooms are equipped with a microwave oven and a refrigerator for your convenience.



Total 1100 Rooms		Number of Rooms	Unit Size (sq. ft.)	Base Occupancy	Max Occupancy
Kona Tower	Kona City View	138	246 sq. ft.	1~2	2
	Kona Partial Ocean View	129	246 sq. ft.	1~2	2
Waikiki Tower	Waikiki City/Mountain View	185	335 sq. ft.	1~2	4
	Waikiki Partial Ocean View	133	335 sq. ft.	1~2	4
	Waikiki Ocean View	441	335 sq. ft.	1~2	4
Suite	1 bedroom Mountain View Suite	23	560 sq. ft.	1~4	4
	1 bedroom Ocean View Suite	23	560 sq. ft.	1~4	4

*An additional charge of \$50 per person per night will be charged if the number of guests exceeds room capacity.
*Family Plan: Children under the age of 17 in the same room with their parents without an extra bed may stay free of charge. *Parking: Self parking for \$39 per day, valet for \$49 per day. *Extra beds are not available.
*Prices listed are subject to change without notice.

Kona Tower

Located on the mountain side, our 13-story Kona Tower offers a choice of city or partial ocean view rooms. The rooms have a sophisticated design, a queen bed, and a bathroom with a bathtub and shower. There is a coffee maker, microwave, LCD TV (cable channels are available) and free WiFi in each room promising a comfortable stay regardless of the length of your visit.



Room Equipment

TV/telephone/air conditioner/
in-room safe/iron/hair dryer/
refrigerator/coffee maker/
microwave/towel/soap/
shampoo/bathtub/
crib (Waikiki Tower only)/
balcony (Waikiki Tower only)/
internet connection (wireless)

Guest Room

246 sq. ft.



Waikiki Tower

The 36-story Waikiki Tower, located on the ocean side, is equipped with balconies in all rooms. Choose from City/Mountain View, Partial Ocean View, or Ocean View rooms. The comfortably furnished rooms offer two double beds, or a king or queen bed and a sofa bed. All rooms feature a bathtub with shower, coffee maker, microwave oven, LCD TV (cable channels available), and free Wi-Fi.



Room Equipment

TV/telephone/air conditioner/
in-room safe/iron/hair dryer/
refrigerator/coffee maker/
microwave/towel/soap/
shampoo/bathtub/
crib (Waikiki Tower only)/
balcony (Waikiki Tower only)/
internet connection (wireless)

Guest Room

335 sq. ft.



Room Equipment

TV/telephone/air conditioner/
safety box/iron/dryer/
refrigerator/coffee maker/
microwave oven/dishwasher/
sink/2 burner stove/
towels/soap/shampoo/
bathtub/
crib (Waikiki Tower only)/
balcony (Waikiki Tower only)/
internet connection (wireless)

1 Bedroom Suite

560 sq. ft.



Waikiki Tower 1 Bedroom Suite

Our one-bedroom Waikiki Tower suites offer a choice of mountain or ocean views. Spacious balconies overlook beautiful mountain and pristine ocean views. With a luxurious king bed and a living room with a sofa bed, the suite is spacious and comfortable for four people. Each suite includes a coffee maker, refrigerator, electric stove, microwave oven, and kitchen utensils.



Kitchen Essentials

Strainer, bowl, pan with lid, frying pan, kitchen knife, paring knife, cutting board, can opener, spatula, spoon (1 large), slotted spoon (1 large), dinner plates (x4), salad plates (x4), soup bowls (x4), spoons, forks, knives (4 sets each), cookie sheets (25x36 cm), paper towels, sponges, dish detergent, dishwasher detergent, storage (2 pieces)



Restaurants & Lounge

From casual restaurants to fine dining that locals love, there are plenty of options to fit your taste.



Café 410

Cafe 410 is a casual restaurant for the whole family. Enjoy traditional and local favorites at this daily breakfast buffet.

[Location] Lobby Level

[Hours] Mon-Fri: 6:30 a.m.-10 a.m.

[Phone] (808) 955-4811

Sat & Sun: 7 a.m.-10:30 a.m.



Café 410

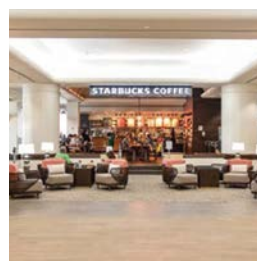


Starbucks Coffee

Enjoy the scent of freshly brewed coffee at Starbucks. WiFi is available free of charge in the cafe at Ala Moana Hotel. This is also one of the few shops in Hawaii that carries Starbucks Reserve coffee - rare coffees from around the world, as well as beer and wine.

[Location] Lobby Level

[Hours] Daily 5:30 a.m.-5:30 p.m.



Starbucks Coffee



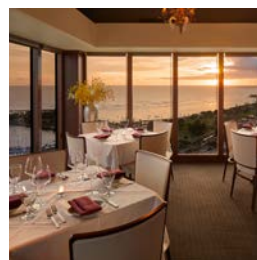
Signature Prime Steak & Seafood

Enjoy a delicious meal of aged prime steak, fresh seafood, and more than 100 types of wine, plus beautiful views overlooking the Pacific Ocean from the 36th floor. Happy Hour in the bar daily. Private rooms are also available.

[Location] 36th floor

[Hours] Mon-Sun 4:30 p.m.-10 p.m.

[Phone] (808) 949-3636



The Signature Prime Steak & Seafood



Cafe at Dada

Enjoy breakfast, lunch, dinner and fine wines. Indulge in colorful European-Pacific cuisine, sandwiches and other casual fare.

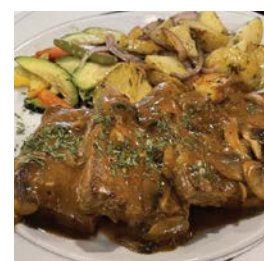
[Location] 3rd floor

[Phone] (808) 888-3232

[Hours] Daily 9 a.m.-8 p.m.



Café at Dada



Pint + Jigger

This popular gastropub offers authentic craft beers and cocktails, an extensive whiskey collection, fine wines and non-alcoholic beverages. Specialties include scotch eggs, double-cut bacon, beer cheese, and oatmeal stout burgers.

[Location] Lobby Level

[Hours] Sun-Thu: 4:30 p.m.- midnight

[Phone] (808) 744-9593

Fri - Sat: 4:30 p.m.-2 a.m.



Pint + Jigger

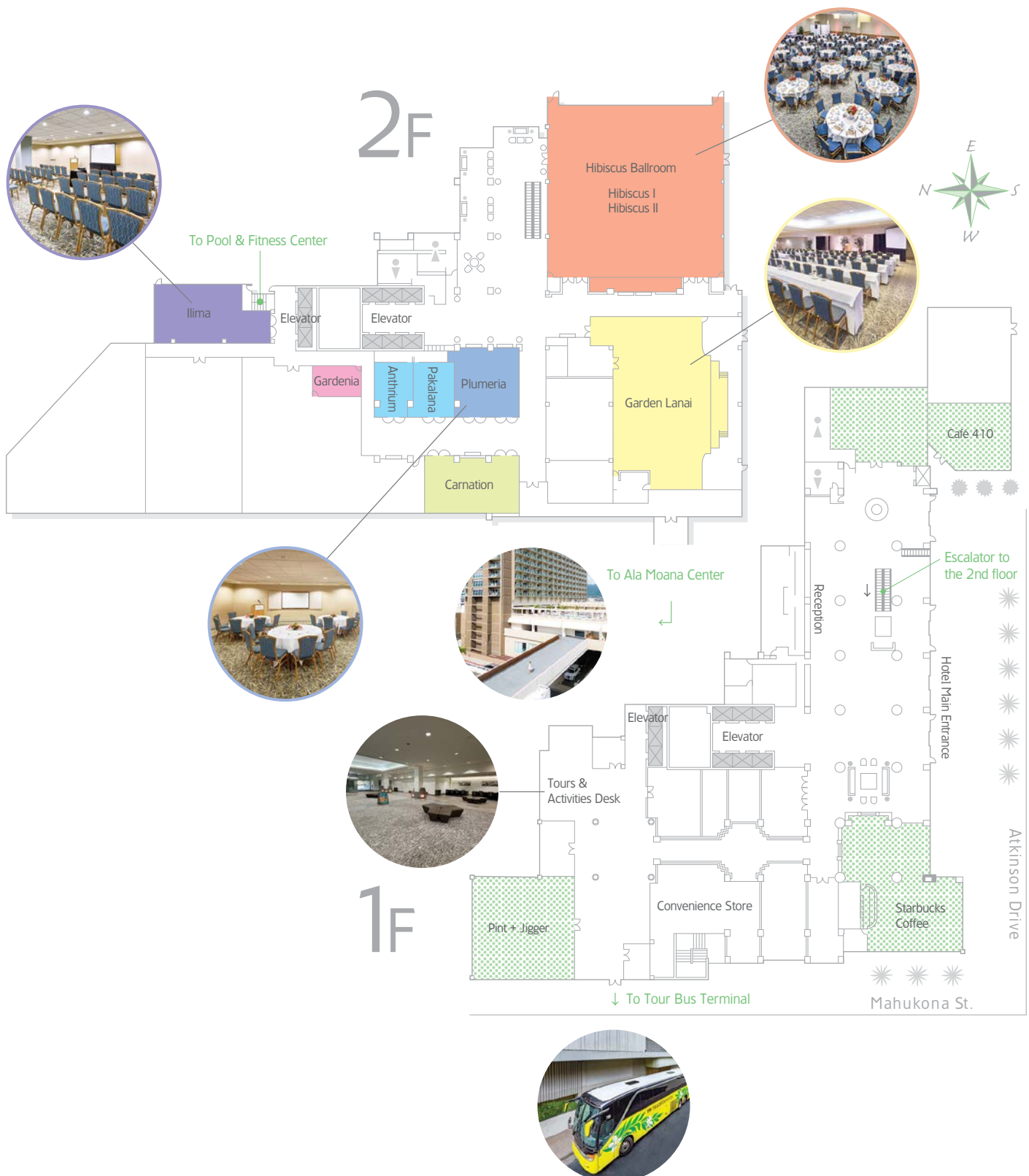


*Business hours listed are subject to change without notice.

Meeting and Banquet

Our fully equipped facilities and experienced staff can handle a range of needs. From lavish weddings to sumptuous banquets and group trips to school excursions, we have you covered.

Ala Moana Hotel offers the capacity to accommodate large groups with meticulous service. The Hawaii Convention Center, the largest event venue in Hawaii, is within walking distance, making this an ideal location for breakouts and companion events.



Room Size				Capacity (seats)					
Venue Name	Area (sq.ft.)	Dimensions	Height (ft.)	Theater	Classroom	Reception	Banquet	Exhibit	Conference
Hibiscus Ballroom	6,888	82 x 84	15	750	400	1,000	500	50	-
Hibiscus I	3,444	41 x 84	15	375	170	475	200	22	-
Hibiscus II	3,444	41 x 84	15	375	170	475	200	22	-
Garden Lanai	2,993	41 x 73	8	300	150	400	200	20	-
Carnation	1,012	23 x 44	8	100	50	120	80	10	24
Pakalana & Anthurium	1,066	41 x 26	8	60	40	90	60	10	24
Pakalana	570	21 x 26	8	30	24	50	30	5	15
Anthurium	520	19 x 26	8	30	20	45	30	5	15
Plumeria	1,023	31 x 33	8	75	45	75	60	8	24
Ilima	1,176	28 x 42	8	75	60	100	100	10	26
Gardenia	322	14 x 23	8	15	15	20	20	4	12

Meeting rooms and ballroom spaces for groups all sizes

The Ala Moana Hotel, one of Oahu's premier locations, offers multipurpose conference and banquet facilities with satellite meeting facilities, wireless Internet access, video and audio equipment. Our convention services manager will be pleased to work with you for your event. The ballroom and meeting rooms have a total area of 15,000 square feet and can host up to 750 guests.

Award-winning cuisine prepared by our head chef, offering a variety of menu options. In addition, we do our best to ensure that guests with food allergies can enjoy our meals with peace of mind.

Meal formats include lavish buffets as well as plated, multi-course menus and receptions with hot and cold hors d'oeuvres. We also offer breakfast boxes to go or for on-site consumption. Contact us for customized options. The coffee and tea served in the banquet hall are products of Starbucks Coffee.

An example of our breakfast buffet menu:

Miso soup, fresh fruit, bakery items, croissants, Danish pastries, Portuguese sausage, buttermilk pancakes, scrambled eggs, crispy bacon, rice, hash browns, local-style fried rice and a selection of juices (guava, pineapple, orange).



Earn ALL points and elevate your stay.

TURN YOUR POINTS INTO MOMENTS

Enrollment is complimentary.
Scan the QR code to learn more.



ACCOR

Ala Moana Hotel by Mantra is part of Accor, a world-leading augmented hospitality group offering unique and meaningful experiences in 5,000 hotels, resorts, and residences across more than 110 destinations.



 #alamoanahotelbymantra

 facebook.com/AlaMoanaHotel

Ala Moana Hotel 